

Medina Message

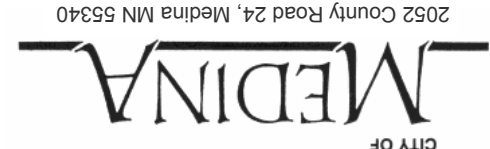
A Quarterly Newsletter of the City of Medina

www.ci.medina.mn.us

Fall 2003

Inside this issue:

- pg. 1 Council sets 2004 preliminary levy
- pg. 1 Upcoming Events & Activities
- pg. 1 Uptown Hamel revitalization
- pg. 2 2003 Building Permit activity
- pg. 2 CSAH 101 Trail completion
- pg. 2 Park Commission progress
- pg. 3 Hamel Water System Treatment
- pg. 3 Fall compost & brush pile information
- pg. 3 Winter parking and season preparations
- pg. 3 Public Works 2003 projects & new truck
- pg. 4 Police Receives Safe & Sober grant
- pg. 4 Holiday "House Checks" service
- pg. 4 Volunteers needed for commissions
- pg. 4 Hunting season & permit information
- pg. 4 Horse Management Practices
- pg. 4 Council approves 2:00 a.m. bar closing
- pg. 5 Where do your curbside recyclables go?
- pg. 5 Salvation Army Collection—Oct. 4th
- pg. 5 New Lighting Ordinance provisions
- pg. 5 Tips to limit storm water pollution
- pg. 6 City contact information



Upcoming Events and Activities

- **2nd** Thurs—Recycling Day
- **7th** Tue—City Council Meeting 7:30 pm
- **13th** Mon—Holiday, City Office Closed
- **14th** Tue—Planning Commission 7:00 pm
- **15th** Wed—Park Commission Meeting 7:00 pm
- **16th** Thurs—Recycling Day
- **21st** Tues—City Council Meeting 7:30 pm
- **30th** Thurs—Recycling Day

October

- **4th** Tues—City Council meeting 8:00 pm (tentative)
- **11th** Tues—Holiday, City Office Closed
- **12th** Wed—Planning Commission 7:00 pm
- **13th** Thurs—Recycling Day
- **18th** Tues—City Council Meeting 7:30 pm
- **19th** Wed—Park Commission Meeting 7:00 pm
- **27th** Thurs—Holiday, City Office Closed
- **28th** Fri—Holiday, City Office Closed
- **28th** Fri—Recycling Day (note the change to Fri)

November

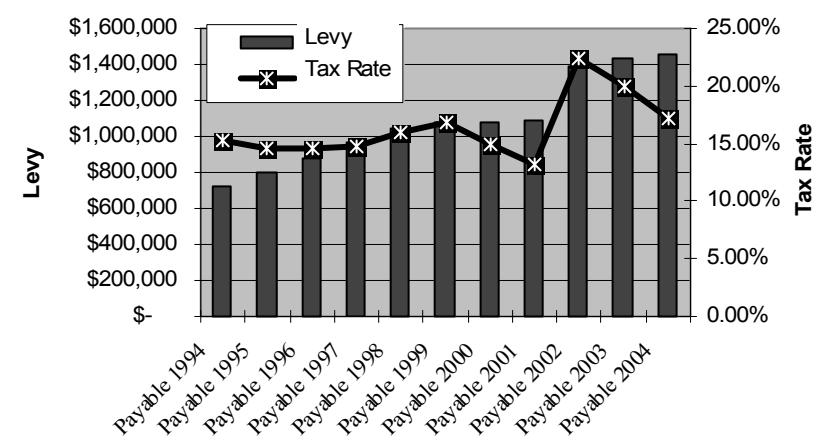
- **1st** Mon—Truth In Taxation Hearing 6:30 pm
- **2nd** Tue—City Council Meeting 7:30 pm
- **9th** Tue—Planning Commission 7:00 pm
- **11th** Thurs—Recycling Day
- **16th** Tue—City Council Meeting 7:30 pm
- **17th** Wed—Park Commission Meeting 7:00 pm
- **25th** Thurs—Holiday, City Office Closed
- **26th** Fri—Recycling Day (note the change to Fri)

December

Council Sets 2004 Preliminary Levy

At their regular Council meeting on September 2nd, the City Council set the preliminary general fund levy at \$1,456,554 for the 2004 budget. The 2004 proposed levy is 1.5% higher than the 2003 levy. Due to the state imposed property tax freeze, the City could only increase the levy by 60% of the amount cut from Local Government Aid (LGA) and Market Value Homestead Credit (MVHC).

Those cuts, which affect both the current 2003 and next year's 2004 budget, amount to \$35,679. With the increase in market value and tax capacity for 2004 payable, the City's tax rate will decline to 17.27%. The chart below provides a better historical analysis of the City's tax levy and rates over the past 10 years.



The Council also set the Truth In Taxation public hearing date for Monday, December 1st at 6:30 p.m. to discuss the 2004 budget and 2004 preliminary levy.

Prior to the September 2nd meeting, the Council conducted a special meeting work session to discuss in more detail the 2004 budget, including department budgets, capital improvement plan, fund balances/reserves, fees, and the water and sewer funds.

The Council and staff will continue to review wage and benefit increases, fee comparisons, and a five to ten year capital improvement plan this fall.

- All meetings at City Hall unless otherwise noted
- Meeting agendas on web site when available

City Continues Process of Uptown Hamel Revitalization

The City Council is continuing a process to pursue revitalization of Uptown Hamel. For years, the City has been examining the need to improve the vitality of Uptown Hamel and increase investment in the area. In late 2000 and early 2001, the City Council updated its comprehensive plan and established a guide plan and planned unit development for mixed use development in the area.

Currently, a developer has expressed interest in the area. The City is in the process of reviewing its goals for Uptown Hamel, has created a master plan of infrastructure costs and is identifying and reviewing options to pay for infrastructure costs. The City Council will have continued discussions this fall and additional information will be available soon on Medina's Web site at www.ci.medina.mn.us. If you have questions, you may also contact City Administrator Chad M. Adams at (763) 473-4643.



www.ci.medina.mn.us

City Hall Office Hours

Mon-Fri 8 a.m. - 4:30 p.m.

Telephone Numbers

City Hall763-473-4643
 Fax763-473-9359
 Police emergency911
 non-emergency 763-473-9209

Official Newspaper

Crow River News
 33 2nd Street NE, Box 280
 Osseo, MN 55369
 Telephone Number: 763-425-3323

Mayor

Phil Zietlow.....763-473-5263

City Council

Jim Lane.....763-473-3302
 Carolyn Smith612-558-1556
 Randy Brinkman ... 763-478-3242
 Bruce Workman ... 763-478-8806

City Administrator

Chad M. Adams....763-473-4643

City Council Meetings

First & third Tuesday of each month at 7:30 p.m.

Planning Commission

Elizabeth Weir, Chair
 Gerald Brost
 Marilyn Fortin
 Ron Johnson
 Sharon Johnson
 Leonard Leuer
 William Loe
 Dick Picard
 Mary A. Verbick

Planning Commission Meetings

Second Tuesday of each month at 7:00 p.m.

Park Commission

Galen Bruer, Chair
 Gerald Dykoff
 Tom Gregor
 Randy Hughes
 Brad Kvanbek
 Robin Reid
 Theresa Richey

Park Commission Meetings

Third Wednesday of each month at 7:00 p.m.

Parks and Planning News

Hamel Legion Park Community Building

Hamel Lions Club Continues to Raise Funds

The City Council will soon be receiving final design plans from the Hamel Lions Club for the Community Building project in Hamel Legion Park. In addition to the plans, a final cost estimate of the project will be presented to the Council in conjunction with a review of available funds. The Hamel Lions have led the planning and fundraising campaign for the project since 1994, and have envisioned the project to serve as a gathering place in Hamel Legion Park.

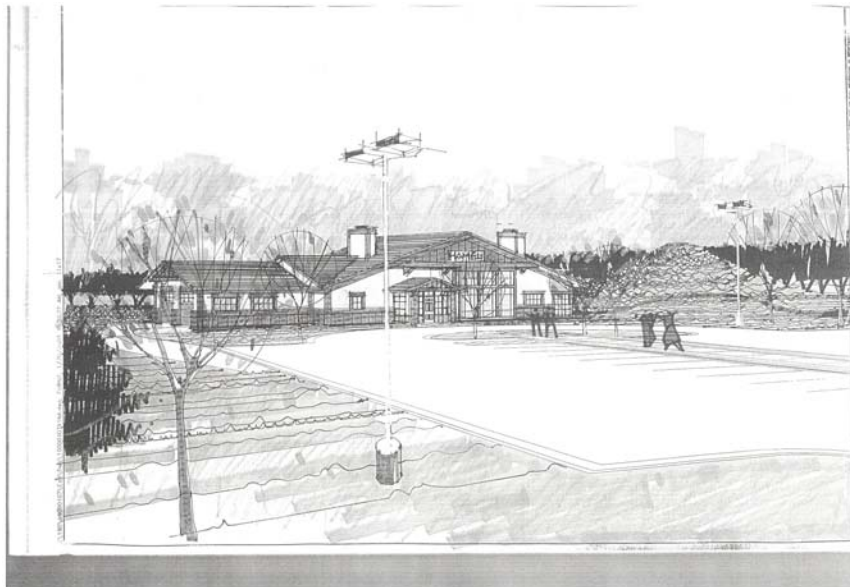
The Lions association with the City on the project goes back a few years. The late Lion Tom Anderson, also a past Mayor of Medina, was instrumental in proposing the project in the beginning. The Lions pictured a facility that would serve families, community groups, sports teams and others in the park with exterior restrooms; a warming house for winter skating, sliding and other activities; and a community meeting space, with a sink and counter service area. A sheltered picnic area for outdoor events, and a storage space for equipment to maintain the city's parks were also a part of the original vision, all of which are included in today's design.

Through charitable gambling proceeds from pull-tab sales at Medina Entertainment Center, and many other fund-raising activities since 1994, the Lions have managed to raise nearly \$550,000.00, which has been allocated for the Community Center. The Lions continue to raise funds for the project that is estimated to be in the \$750,000—\$800,000 range, which includes site improvement costs, once everything is completed.

The Council and Park Commission have been working to assist with the site development costs for the project, from funds allocated to the city's parks. As part of the ongoing fundraising campaign, the Lions are seeking private contributions from the community for the project. The Hamel Lions may be contacted at P.O. Box 31, Hamel, MN 55340, attention to Eric Jungels. Phone number: (763)550-9303.

The Hamel Lions have been working closely with members of the City Council, Park Commission, Planning Commission and staff in planning and preparing for this project. Thousands of hours have been donated by the Lions in efforts to make the project a reality. It is the intent of the Hamel Lions Club, to provide the needed funds for the Community Center to the City of Medina, in an effort to begin construction in the spring of 2004.

The City Council is targeted to discuss the project plans, cost estimates, and available funding at the October 7th Council meeting.



Architect's Rendering of Building and Site in Hamel Legion Park

2003 Building Permit Activity

Below are 2003 year to date numbers (through 9/19/03) for residential new home building permits, compared to 2001 and 2002.

	2001	2002	2003 YTD
Permits	21	60	53
Units	21	60	53
Value	\$11,842,700	\$37,251,540	\$30,557,950

Below are other residential permits (remodels, additions, accessory buildings, decks, etc.) for 2003 year to date, compared to 2001 and 2002.

	2001	2002	2003 YTD
Permits	101	154	92
Value	\$5,139,300	\$6,684,050	\$6,136,230

Trail Link to be Completed along CSAH 101

On Tuesday, September 2, the City Council approved the construction of a pedestrian/bike trail link along County Road 101. As part of the decision, the trail will be completed in 2003 and will now extend the entire distance from State Highway 55 north to Hackamore Road along County Road 101.

The trail is being funded through the City's Park Fund, which consists of park dedication fees paid from area development.

Park Commission Progress

Upon completing the Medina Trail Study, which is available on the City's web site for review, the Park Commission is now focusing on a capital equipment inventory and improvement plan.

The Commission is also working to recognize Hamel Legion Park donors through a kiosk and/or plaques. Later this fall, the Commission intends to begin drafting a Park Use Policy for City Council consideration.

General Information

Where Do Your Curbside Recyclables Go?

Have you ever wondered what happens to the recyclables picked up curbside in Medina? Here are the answers:

- **Paper:** Is distributed to five different plants that make ceiling tiles, recycled paper, cellulose insulation, roof shingles and felt backing, and shoe boxes.
- **Cardboard:** Is sent to four different plants that produce craft paper, roof shingles and felt backing, cereal boxes, and shoe boxes.
- **Glass:** Is hauled to Anchor Glass in Shakopee, MN to produce glass containers.
- **Aluminum Cans:** Are shipped to Anheuser Busch to produce aluminum cans.
- **Tin Cans:** Are transported to a scrap metal yard in St. Paul and are marketed to numerous tin producers for a wide variety of tin products.
- **Plastics:** Are taken to a facility in Iowa, where they are used to produce tables, chairs and park benches.



Medina recycles curbside every other Thursday (see the calendar on page 1). If you need additional information or have questions, call (952) 476-0012 or e-mail ackroeger@aol.com

Salvation Army Collection

Saturday, October 4th
9 am.—1p.m. ONLY

Orono Intermediate School Parking Lot

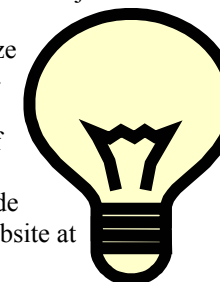
Contact the new Salvation Army collection notice phone number at (952) 476-0012 if you have any questions.

New Lighting Ordinance Provisions Effective January 22, 2004

Medina's Lighting Ordinance, which was published on January 22, 2002 included a two-year time of compliance that effects non-residential properties. The Lighting Ordinance states that "all land uses, developments, buildings and structures on non-residential properties must be brought into compliance with the ordinance within two years of its effective date if adjacent to residential property."

The intent of the ordinance is to minimize the careless light usage that affects the nighttime environment, while preserving safety, security, and nighttime use and enjoyment of property.

The full ordinance and details, under code section 829, may be viewed on the City's website at www.ci.medina.mn.us



Tips to Limit Storm Water Pollution

Are you watershed friendly? Do you know what a watershed is? What are you doing to limit storm water pollution? Hopefully the information below will help answer these questions and encourage you to prevent storm water pollution.

A watershed is generally defined as an area of land that catches rain and snow, which then drains or seeps into a wetland, stream, lake, or groundwater. All property in Medina is in a watershed. Take note that even if your property does not have a wetland or stream, that it does not mean drainage from your property will not drain into a wetland or stream.



Water that leaves your property can carry pollutants, whether it is sediment from exposed earth, toxic compounds from spilled paints or oil leaking from vehicles, nutrients from septic systems, animal waste, as well as litter from lawns that may include trash or grass clippings.

Pollutants that leave your property are considered "non-point pollution." Environmental Protection Agency (EPA) studies demonstrate that 70% of all water pollution is caused by storm water run-off. Because everyone contributes, everyone must work to prevent pollution.

Here are a few tips to limit storm water pollution:

1. Compost or mulch leaves. If your yard has a limited amount of fall leaves, mulch with a lawn mower and leave on the grass. Mulching helps enrich the soil and provide limited nutrients for the grass. If you have large amounts of leaves, they can be composted and used for winter mulch around trees or on flower gardens.
2. Use ice and snow melting chemicals only when needed. The chemicals can add to run-off pollution.
3. Plan ahead for spring. Melting snow and spring rains can cause erosion of any exposed soils. Early fall seeding can be done to cover any bare spots. Any construction sites should be protected by silt fences.
4. Conduct periodic cleanup of property to eliminate animal waste and trash.
5. Other information is available through a few good web sites at www.epa.gov/nps or www.dnr.state.mn.us/water



Horse Management Practices (Cont'd.)

As a preview to the Executive Summary and Resource Guide, some of the basic manure handling principles include: 1) covering a manure pile to prevent rain from leaching out nutrients; 2) keeping manure piles at least 100 ft. from wetlands; 3) spreading manure on land only from April to September; and, 4) completely removing storage piles at least once per year.

More information pertaining to horse management practices or upcoming meetings will be posted on the City's website at www.ci.medina.mn.us

Public Safety/General Information

Department Receives Safe and Sober Grant

The Medina Police Department, along with the Orono and Corcoran Police Departments, have received a Safe and Sober Grant for 2003. The grant funds will provide extra traffic patrols, targeted at keeping local streets and highways safe.

An approximate 130 hours of extra traffic patrol in Medina will occur as part of receiving the grant. Medina officers presently concentrate traffic enforcement in areas where accidents occur and where complaints are received from citizens.

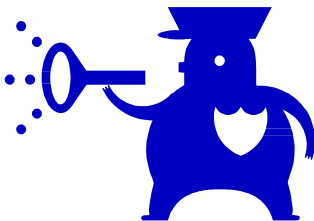
If you have traffic concerns in your area, please contact the Medina Police Department. Drive safe and buckle up!

Holiday "House Checks" Service

With the holiday season just around the corner, Medina Police will once again be providing a "House Check" service. If you are planning an extended vacation, or just a short trip for the weekend, you may notify the Medina Police Department to let them know of your time away from your home and to provide any contact information, or other pertinent information.

During the vacation, the officers will do drive-by visual inspections; and, when time permits, pull doors to make sure your homes are secure. If a problem is found, the Department may then contact you or a key holder.

Give the Department a call at 763-473-9209 and get your house on the list. Have a great holiday season!



Horse Management Practices

The City Council recently accepted an "Executive Summary of Medina Horse Management Practices" on September 16th to be used as one focal point of educating horse owners in Medina. The summary was presented to the Council by a committee of Medina Horse Association representatives as well as City representatives.

Two information meetings pertaining to the Executive Summary and a Medina Horse Association's Resource Guide for Keeping Horses in Medina are planned for **Monday, October 20th from 7:00 to 9:00 p.m.** and **Sunday, October 26 from 4:00 p.m. to 6:00 p.m.**, both at City Hall. Horse owners and interested persons are invited to attend either one of the meetings.

The City Council also supported an education budget of \$10,000 to cover printing costs of the Resource Guide, meeting expenses, and speaker/technical assistance expenses. The City agreed to fund \$3,000 of the budget and the additional \$7,000 is being applied for grant funding through the Minnehaha Watershed District.

In addition to the two information meetings in October, a nationally renown speaker is being invited to speak later this fall; and, scheduling an open forum as well as hiring a technical consultant are planned.

Continued on Page 5

Volunteers Needed for 2004 Appointments

The City Council will again be seeking volunteers to be appointed or re-appointed to the following commissions, committees, etc. on January 1. Please contact a Councilor or the City Office if you are interested with serving any of the following:

- o Lake Minnetonka Communication Commission
- o Elm Creek Watershed Commission
- o Pioneer-Sarah Creek Watershed Commission
- o Minnehaha Creek Watershed Commission
- o Communities in Collaboration Council
- o Healthy Communities Committee
- o Highway 55 Corridor Coalition Joint Powers

A special thanks to all 2003 volunteers!

Hunting Season Is Here

The City of Medina permits hunting on a limited basis. A hunting permit is required for anyone who is hunting in Medina, except for landowners and their relatives who are hunting on their own property.

To receive a permit, you must have written permission from a property owner. Medina's hunting ordinance is very comprehensive and can be viewed at the police department or at the City web site at www.ci.medina.mn.us.

Please take the time to review the ordinance to understand restrictions Medina has in effect. If you have any questions, call the Police Department at (763) 473-9209. Be careful while hunting and respect the rules.



Council Approves 2:00 a.m. Bar Closing

On August 19th, the City Council approved a 2:00 a.m. closing time for on-sale license holders. State law recently went into effect on July 1, which allowed municipalities to extend the closing time.

Establishments interested in extending to the 2:00 a.m. closing must file an application with the state.

The ordinance now states that "no sale of intoxicating liquor or wine for consumption on the licensed premises may be made between 2:00 a.m. and 8:00 a.m. on the days of Monday through Saturday; and, after 2:00 a.m. on Sundays, except as provided by Subd. 3; and, between 8:00 p.m. on December 24 and 8:00 a.m. on December 25, except as provided by Subd.3."

Subd.3 refers to liquor being consumed in conjunction with sale of food.

Also, "no sale of 3.2 percent malt liquor may be made between 2:00 a.m. and 8:00 a.m. on the days of Monday through Saturday, nor between 2:00 a.m. and 12:00 noon on Sunday."

Details of the ordinance can be viewed at City Hall. The ordinance will also be posted soon on the City's web site.

Public Works News

Hamel Water System Treatment

The City Council and staff have recently reviewed additional design options and cost estimates for treating water in the Hamel Water system. Council directed staff to schedule informational meetings with Hamel water residents, to explain the options and to receive feedback from the residents.



Although the meetings have not been set, staff will be distributing a separate letter to Hamel water residents to provide some information on the options and the meeting dates, times and places. The meetings are expected to be held this fall. Meeting notices will also be posted on the City's web site at www.ci.medina.mn.us

The Hamel Water system has two water quality issues of concern. The first concern, which is health related, involves the failure to meet radium and gross alpha standards. The City must become in compliance by June of 2006.

The second concern, which is an aesthetic concern, involves a failure to meet iron and manganese standards in some of the wells. However, there is no federal or state requirement to meet the standards.

The treatment options currently involve a system to reduce the radium and gross alpha system, which is the least expensive option. Other options include systems to also reduce the iron and manganese levels; or, for private homeowners to reduce the iron and manganese levels.

Compost and Brush Pile Open through Fall

Compost Pile: consists of leaves and grass trimmings.

- o **Hours:** Open daily through the fall

Brush Pile: consists of tree waste and garden material.

- o **Hours:** Wednesdays from 4 p.m. to 7 p.m.
Fridays from 8 a.m. to 11 a.m.

Any tree logs that can be used for fire wood should be separated. (Wood is available to be picked up by the public).

*Materials Not Accepted: Hay, tree stumps, painted or treated lumber.



2003 Public Works Projects

Among the list of projects completed to date in 2003 through the Public Works department:

- o Final lifts of pavement on Brockton Lane and portion of Chippewa Road.
- o Ditch/erosion control measures on Deer Hill Road west.
- o New culverts on Willow Drive at Crosby Creek for safety improvement.
- o Installation of signal lights at Willow Drive and Highway 55 intersection.

Winter Parking Restriction

It won't be long before the snow is flying and the plow trucks are plowing. Therefore, street parking restrictions will soon be in place. The City of Medina's parking ordinance prohibits parking on any City street from **November 1 through March 31, from 1:00 a.m. to 6:00 a.m.** The purpose of the ordinance restriction is to allow snowplows to effectively move snow without having the conflict of plowing around cars.

It is also advisable to avoid on-street parking anytime it snows. Please help keep the streets clear by pulling your vehicles off the streets. Thank You!



Preparations for Winter Snow Removal

A few extra things to remember about snow removal in Medina:

- o **It is illegal to plow snow from your driveway onto any public roadway.** The property owner will be liable for any violations, even if a private snow contractor is used.
- o **Please remove or mark obstructions on City right-of-way,** which includes low bushes, planters or rocks. The City does not assume responsibility for damage caused during snow removal.
- o **Secure your mailbox.** Mailboxes are often knocked down from flying snow, instead of being hit by the plow. The City does not repair mailboxes.
- o **Many City roads are slippery, and extra caution needs to be taken.** Medina does not have a dry pavement policy, meaning heavy use of de-icing materials.
- o **Some City roads may become temporarily impassable.** The City crew does not maintain 24-hour service during snowstorms or high winds, which cause drifting.
- o **Keep snow cleared around fire hydrants on or near your property.**
- o **Prevent children from building snow forts next to roads.**



Public Works Purchases New Truck

The City recently took delivery of a new single-axle truck that is equipped with snow plow, wing, underbody scraper, and V-box sander with exchangeable flat bed. The truck cost \$130,000 and will be used year around. The new truck replaces a 1981 single axle plow truck.

